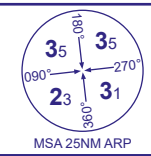


INSTRUMENT APPROACH CHART - ICAO

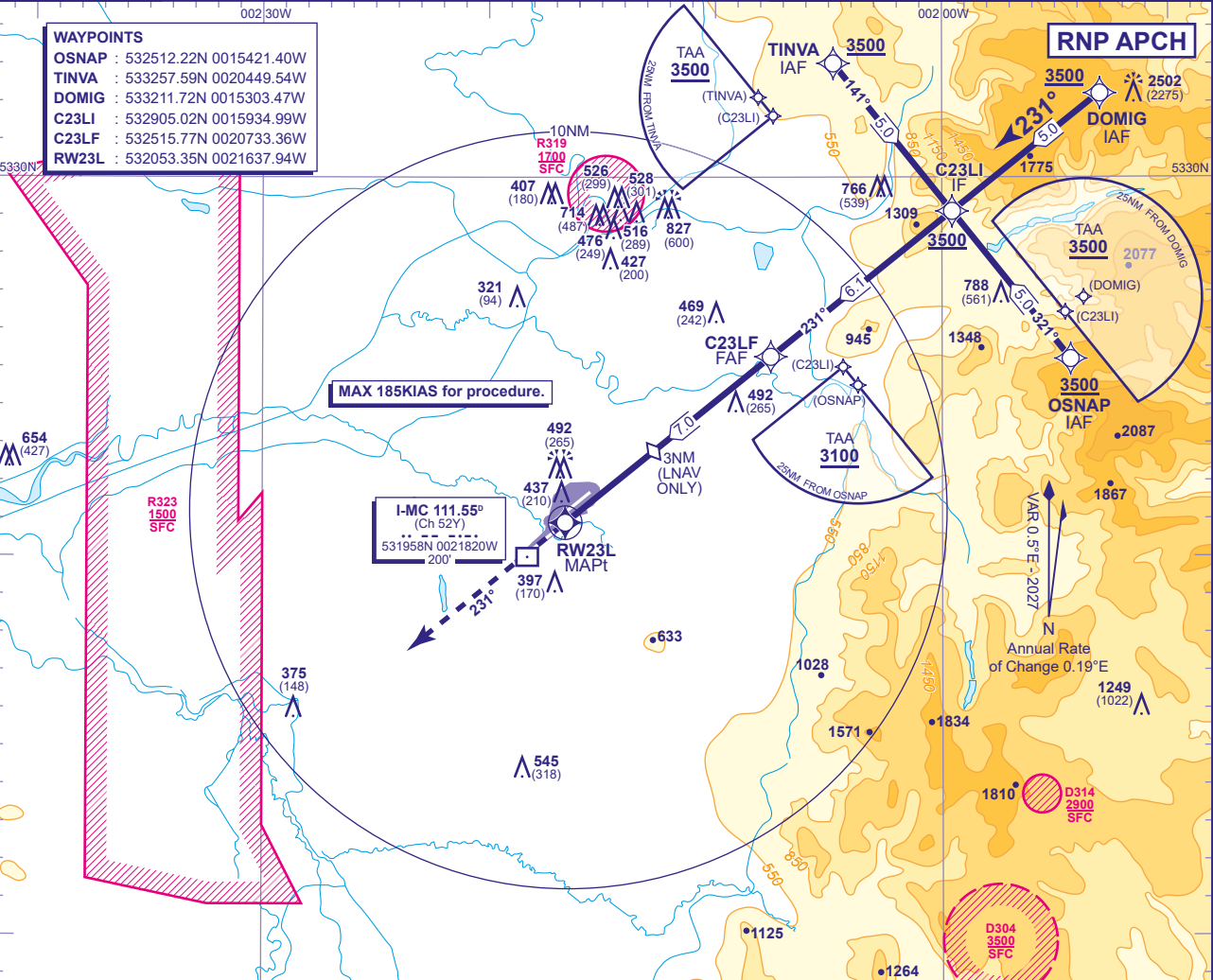
MANCHESTER RNP

RNP  
RWY 23L  
(ACFT CAT A,B,C,D)

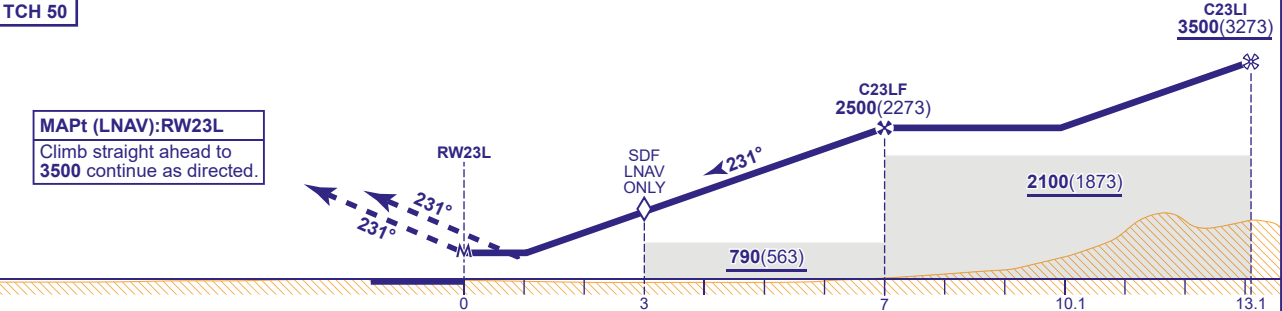


APP	118.580, 135.005	MANCHESTER RADAR	AD ELEVATION	257
	121.355	MANCHESTER DIRECTOR	THR ELEVATION	227
TWR	118.630, 119.405	MANCHESTER TOWER	OBSTACLE ELEVATION	2502 AMSL (2275) (ABOVE THR)
	121.855, 121.705	MANCHESTER GROUND		
ARRIVAL ATIS	128.180	MANCHESTER INFORMATION	BEARINGS ARE MAGNETIC	

MIN TEMP	-15°C
TRANSITION ALTITUDE	5000



RECOMMENDED PROFILE Gradient 5.2%, 320FT/NM					
NM to RW23L	7	6	5	4	3(LNAV SDF)
ALT(HGT)	2500(2273)	2190(1963)	1870(1643)	1550(1323)	1230(1003)



Aircraft Category		A	B	C	D	Rate of descent	G/S KT	160	140	120	100	80
OCA (OCH)	LNAV/VNAV	570(343)	580(353)	590(363)	600(373)		FT/MIN	850	740	640	530	420
	LNAV	680(453)	680(453)	680(453)	680(453)							
VM(C)OCA (OCH AAL)	Total Area	740(483)	800(543)	1110(853)	1110(853)							

NOTE 1 RCF: Refer to AD 2.22.  
2 Pilots should 'Request RNP Approach' on first contact with Manchester Radar.